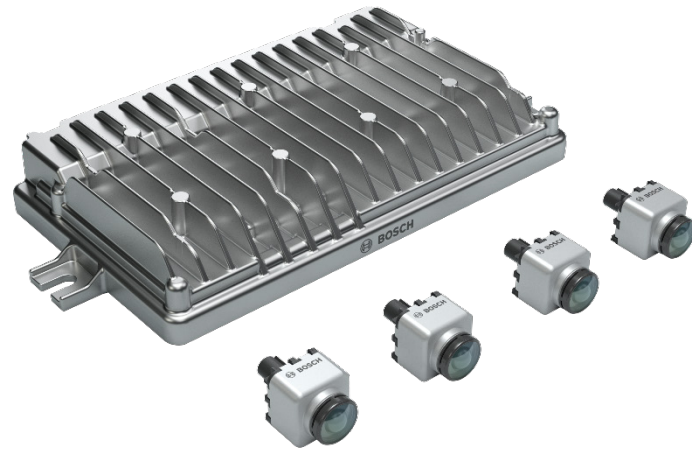


# Multi-camera system plus

360 degree surround view to ensure easy, safe and comfortable parking and maneuvering

Helps to avoid collisions and reduces parking stress



## comfortable parking

and precise alignment with lines, curbs, and infrastructure

## safe maneuvering

through robust collision avoidance and immediate scene understanding

## innovative functions

thanks to image analysis and sensor data fusion with ultrasonic sensors

- ▶ More precise parking and maneuvering, incl. lines and obstacles
- ▶ Generates a real and dynamic 3D surround view around a virtual vehicle model, and accurately displays the vehicle's surroundings
- ▶ Enables partially and highly automated parking functions including automatic emergency braking upon objects and pedestrians at a speed of up to 10 km/h



**BOSCH**  
Invented for life

### TECHNICAL CHARACTERISTICS

Optics	Horizontal field of view	> 190°
	Vertical field of view	> 140°
Imager	Resolution	2.0 MP
	Frame rate	30 frames per second
Sensors per system		up to 6 cameras and 24 ultrasonic sensors
Data interfaces	Sensors	LVDS (video), PSI5 (ultrasonic)
	Video out	LVDS/ETH (H.264)
	Vehicle	2 x CAN(-FD) / 1 x Flexray / 1 x Ethernet / Wifi / BT
Power	Interface	Power over coax
	Consumption	~ 30 W
Safety level		ASIL-B
Box size	Camera	23 x 23 x 38 mm
	Control unit	239 x 121 x 34 mm