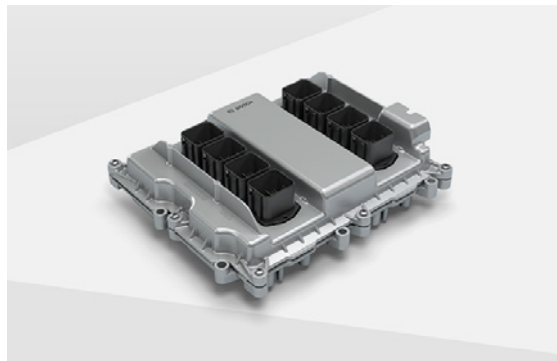


Electronic engine control unit

For optimal engine operation



The electronic engine control unit is the central controller and heart of the engine management system



powerful

The high performance micro controller and the software functionality support future powertrain requirements too.

future-oriented

The software architecture integrates model based as well as self-learning functions and can be simplified with advanced methodologies to enable efficient data calibration.

- ▶ It controls the fuel supply, air management, fuel injection and ignition.
- ▶ Due to the scalability of its performance, the control unit is also able to control the exhaust system as well as to integrate transmission and vehicle functions.
- ▶ The electronic engine control unit manages all types of powertrain and topologies such as gasoline, diesel, compressed natural gas, ethanol and also hybrid and fuel cell system.